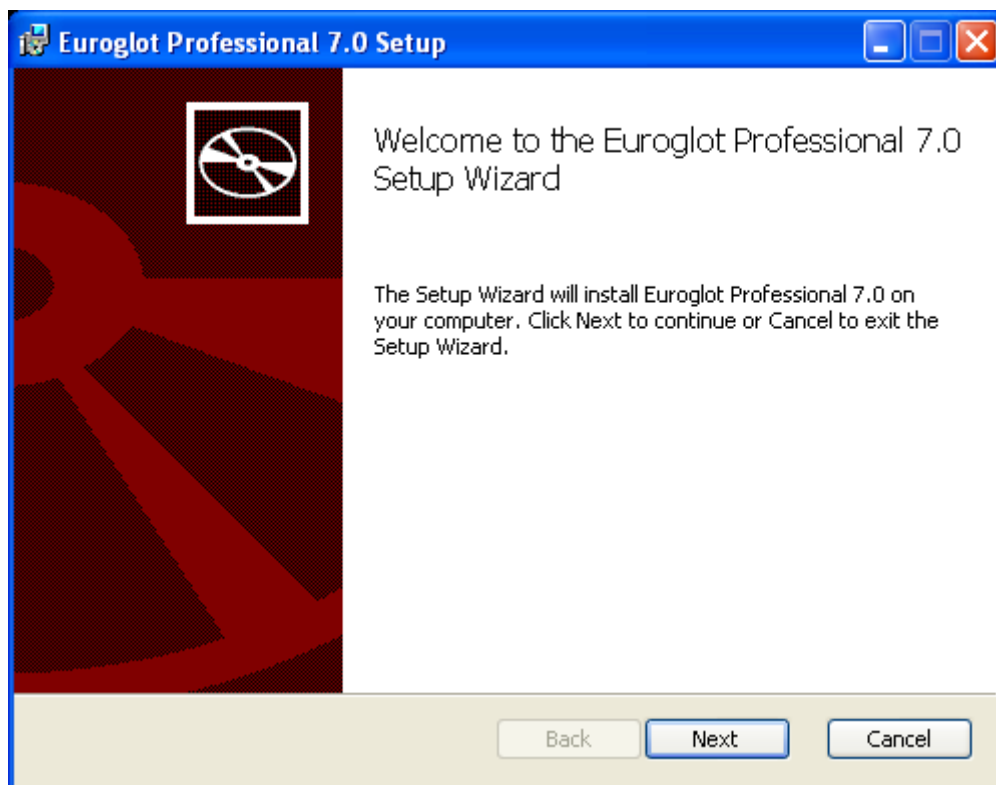


## Manual Euroglot Professional 7.0

### Step 1:

Put the CD-ROM in the CD/DVD station of your computer. In a few seconds the Setup Wizard will appear on your screen. Click NEXT to proceed.



### Step 2:

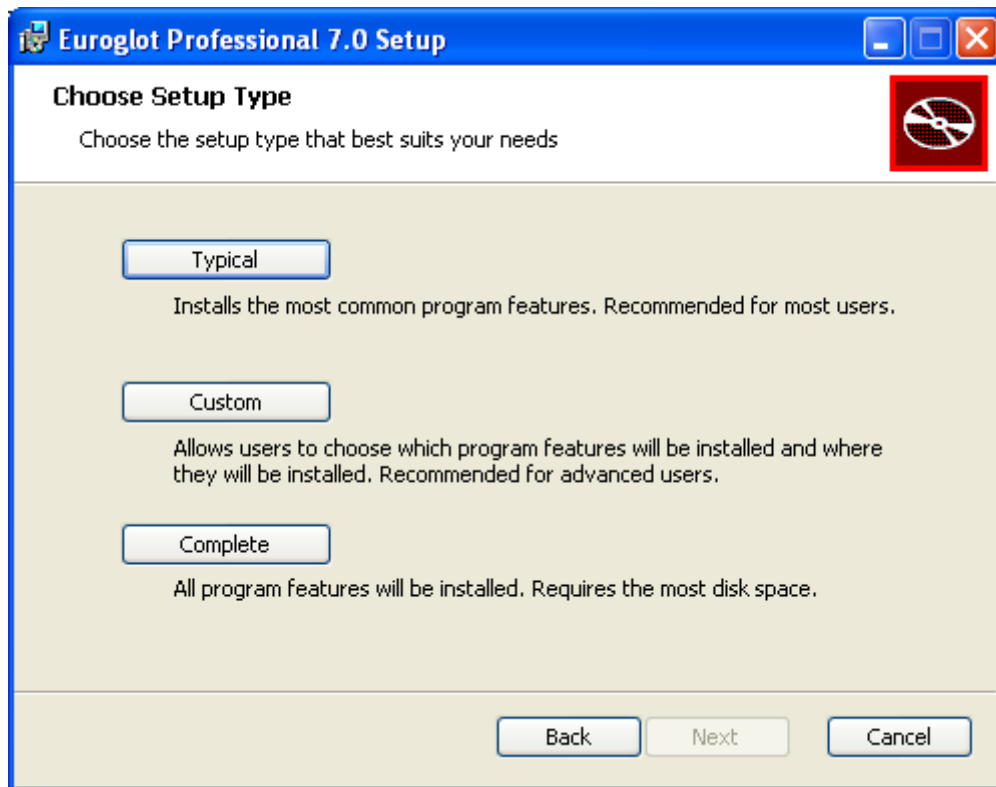
In the *Choose setup type* screen you choose an installation type.

**Typical:** this type installs the common program parts. This type is recommended for most users.

With **Custom** you can choose which parts you want to install and where you want to install them. This type is recommended for advanced users.

**Complete** installs all Euroglot Professional parts including the Souffleurs module, (pronunciation module). This pronunciation module takes a lot of your disk space. When you do not have a Souffleur licence, we recommend not to choose the Complete installation.

After you made your choice, click *Next*. The installation will start.



**Step 3:**

When you start Euroglot for the first time the screen "Licence Data" will appear. Please give in the codes you will find below. These codes represent the languages, modules and number of licences you have.

Euroglot Professional 7.0

Serialkey:

Accesscode:

Registrationname:

Licentiegegevens

Licentiehouder:

| Serienummer:         | Toegangscode:        |
|----------------------|----------------------|
|                      |                      |
| <input type="text"/> | <input type="text"/> |

Uw licentiecodes zijn voor enkel gebruik.  
Een gebruiker gebruikt Euroglot.

OK Annuleren

**Stap 4:**

To prevent mistakes, please copy/paste the **codes** and **the registration name** right fields in the licence screen. When the codes are well imported the fields will get a green color. When there is something wrong with the codes or you didn't import them well the fields will get a red color. Underneath in the screen you can see how many licences are available and how many users are using Euroglot at that moment.